



Let **UK** Home

1 Bedrooms

Flat

Located in London

£3,163 Per Month



info@letukhome.co.uk

<https://www.letukhome.co.uk/>

01795 358 886



4 Merchant Square East London

W2 1AN



Let UK Home are delighted to offer this contemporary one-bedroom apartment in 4B Merchant Square with a view of the Grand Union Canal.

Stunning interior designed 1 bedroom, 1 bathroom luxury apartment situated on the fifth floor of this prestigious building which features concierge service, lift service, and secure underground parking.

The stunning apartment comprises a beautiful reception room with superb views, a modern fitted open plan kitchen, 1 double bedroom, 1 bathroom and ample storage space.

The apartment offers easy access to great transport links such as Paddington Train Station (Elizabeth ,Bakerloo, Hammersmith & City, Circle, District lines and Heathrow Express) Edgware Road (Circle, District and Bakerloo lines).

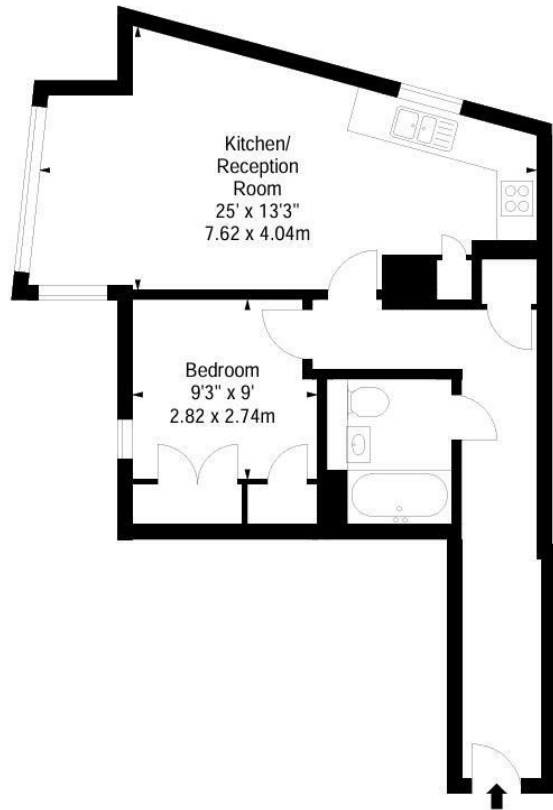
4B Merchant Square is located waterside, in the modern Paddington Basin. This central location is close to Oxford Street, Connaught Village and historic Hyde Park.

4 Merchant Square East London

£3,163 Per Month

- 5th Floor
- Lift service
- Parking
- Available furnished or unfurnished
- CCTV
- Concierge service
- Video entry
- Digital TV





Let **UK** Home

3F 2 Eastbourne Terrace
Paddington
London
W2 6LG

01795 358 886

info@letukhome.co.uk

Council Tax Band:

Local Authority:

Agents Note: Whilst every care has been taken to prepare these particulars, they are for guidance purposes only. All measurements are approximate and are for general guidance purposes only and whilst every care has been taken to ensure their accuracy, they should not be relied upon and potential buyers/tenants are advised to recheck the measurements.

Energy Efficiency Rating		
	Current	Potential
Very energy efficient - lower running costs		
(92 plus) A		
(81-91) B		
(69-80) C		
(55-68) D		
(39-54) E		
(21-38) F		
(1-20) G		
Not energy efficient - higher running costs		
England & Wales		
EU Directive 2002/91/EC		

<https://www.letukhome.co.uk/>